

# ICELINGS

TUBE-ICE<sup>®</sup> MACHINES

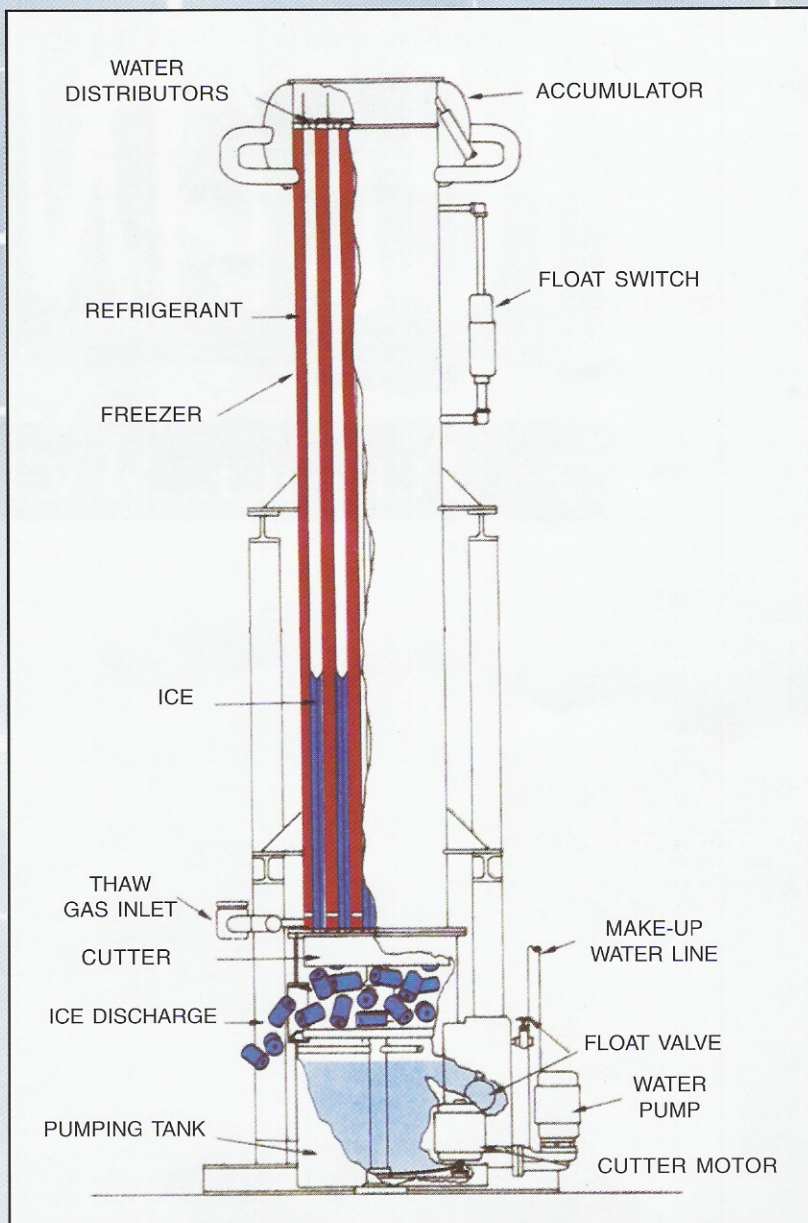
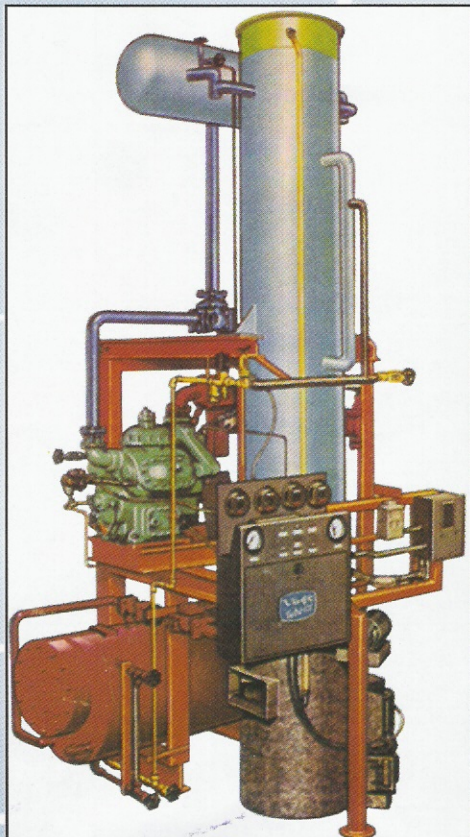




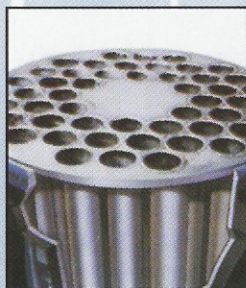
# ICELINGS

## TUBE ICE® MACHINE

Tube-Ice is frozen on the inside of vertical stainless steel tubes by refrigerant circulating in the surrounding shell. A film of water falls from the top of each tube, freezing from the outside in. As the water freezes, salts and impurities are washed back to the pumping tank for automatic removal. When the "tubes" of ice have frozen to the desired thickness, the cycle is reversed and hot gas from the condenser is introduced into the refrigerant in the shell, releasing the ice. The Tube-Ice falls into a rotating cutter which cuts uniform ice tubes to desired lengths.

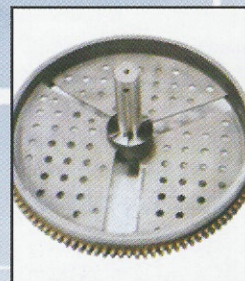


1<sup>3</sup>/<sub>8</sub>" DIAMETER X 1" LONG



**Icelings Tube-Ice® Freezers** use high-quality stainless steel for all water and ice contact surfaces providing corrosion resistance and easy cleanability.

**Stainless Steel Cutters** are uniquely designed to produce uniform cylinder ice.





Now manufactured in India – The World's Best Ice Machines! Icelings™ Tube Ice makers are renowned for their in-built quality, power efficiency and ease of operations with successful multiple installations through out India and the world. Ideal for Dyes/chemical, Seafood Processing, Concrete and Hospitality industries with capacities ranging from 5 tons to 80 tons per day using either Freon or Ammonia refrigerants.

## **Advantages of Tube Ice over Block Ice Plant**

### **Efficiency**

- \* Highest Efficiency – Only 60 units per ton of ice.
- \* Lowest Space/Production Ratio-Only 100 Sq. ft. required for 40 TPD machine.
- \* Batch Cycle-Ice batch in less than 20 minutes.

### **Cost**

- \* Lowest Operating cost - Production efficiency without brine solution, cans, etc.
- \* Minimal maintenance - Machines are known to run with minimal or no maintenance.
- \* Overall Lowest Investment - NPV greatest as compared to Flake / Block ice plant.

## **Advantages of Tube Ice over Flake Ice Plant**

### **Tube Ice**

- Direct refrigeration through heat transfer tubes resulting in lower energy consumption.
- No moving parts for making of ice and only one cutter assembly provided for ice sizing.
- Has in-built chilling system and does not require any external chilling plant further reducing electricity consumption.
- Easy delivery through inexpensive screw conveyors.
- Uniform Tube ice of 1" dia resulting in low meltage and zero lump formation.

### **Flake Ice**

- Continuous operation of flaker motor across the freezing plate, resulting in high electricity consumption.
- Wear & Tear of moving parts resulting in high maintenance and reduced efficiency.
- Requires additional chilling plant (greater electricity consumption) to reduce inlet water temperature to achieve rated capacity.
- Requires expensive pneumatic conveyers for conveying.
- Lump formation after storing for longer period and increased meltage due to higher surface area exposed to ambient temperatures.

Enclosed is a questionnaire to be filled out in order for us to send you a proposal of the required ice machine. We would be glad to show you our state-of-the-art plant so that you can see our Tube Ice machines in operation.

We look forward to your valued response would like to meet you regarding your queries. Please visit our web-site at "**[www.icelings.net](http://www.icelings.net)**"

For detailed information kindly call or fax Mr. Rustom Irani or Mr. Balan Iyer at our correspondence address.